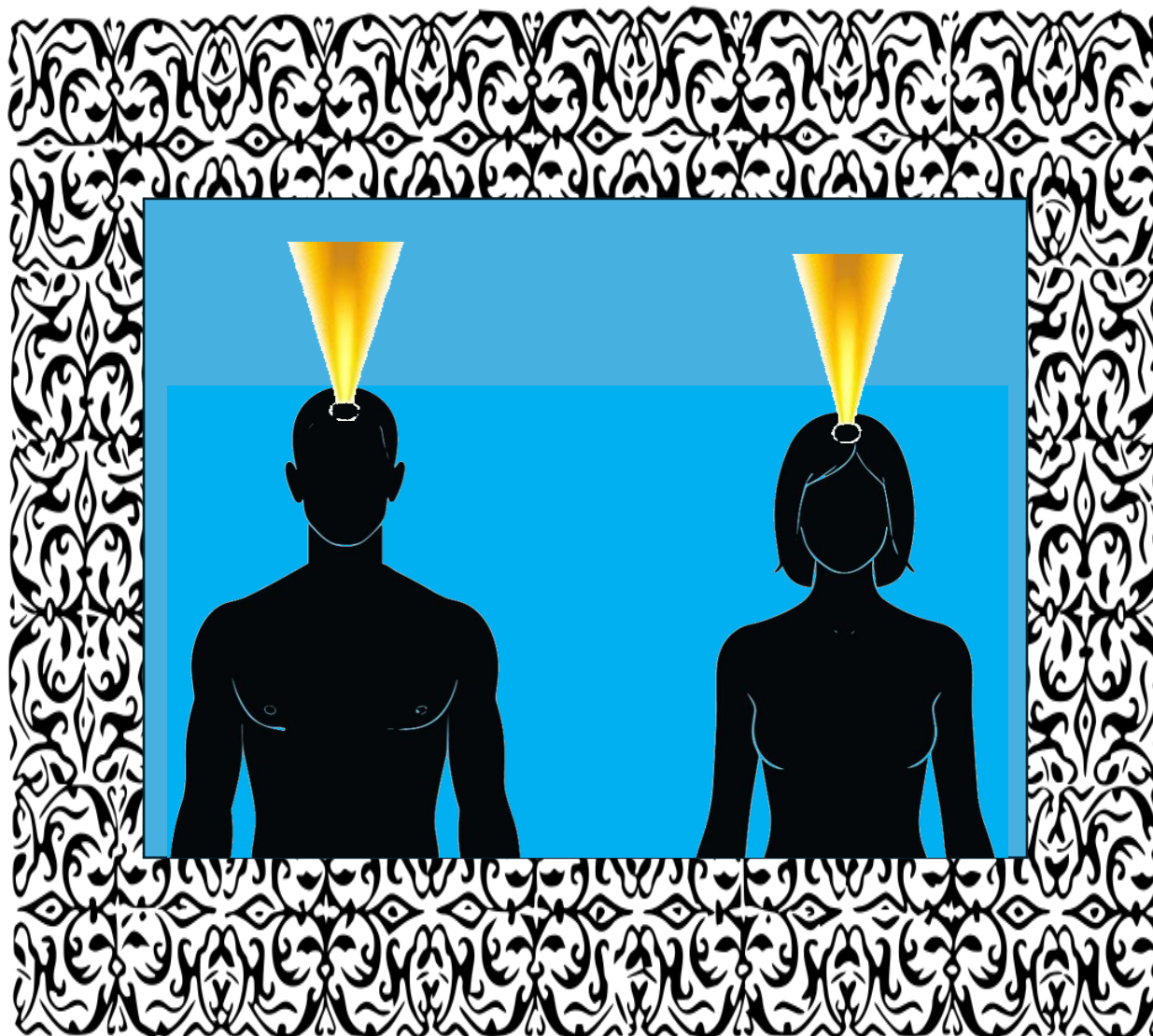


Psychic Intuition Center

The Psychic Intuition Center starts above the Crown Chakra and extends down into the skull as far as the corpus callosum



Psychic Intuition Test

To gauge the strength of your Intuitive abilities and to more-firmly verify your true area of psychic strength, choose from among four possible answers to each question which answer best reflects what would be your *first* response in each situation.

1. Your present job has ended. In order to find a new job and further your career, you...

- A. Systematically check the job listings at every job-search website you can find and analyze which offered positions appear to be the most logical ones to apply for.
- B. Picture yourself in several different jobs, then search for the job that fits the mental pictures you conjured up in your mind.
- C. Check the job listings at job-search websites and answer only those which instantly 'grab' you, feeling confident the right job will come along.
- D. Choose a job because you felt comfortable with the people you met when you were interviewed.

2. You are single and have reached a point in your life when you no longer want to be alone. To go about finding a new partner, you...

- A. Make a mental list of all the qualities you want in a partner, then set about finding someone who fits all the qualities on your list.
- B. Are less concerned about the person's characteristics, qualities or looks and more concerned with how you **feel** when you're with this person.
- C. First form a mental picture of what your partner should look like.
- D. Go by instinct, knowing you will be led to the right person at the right time.

3. In order to find a new place to live, you...

- A. Interview several real estate brokers, find the most competent one, then review every home listed in your price range.
- B. Find a real estate broker with whom you feel comfortable, then trust him or her to locate the ideal home for you.
- C. Drive around the neighborhood you'd like to live in, or search it online, and find available houses that look good to you and ask to see those.
- D. Simply know that the right place for you will turn-up if you stay open and aware.

Psychic Intuition Test, con't.

4. It's time for a vacation/holiday. Your preferred choice of destination is...

___ A. To an isolated spa on the Florida coast, where you will enjoy mud baths, massages, and warm sunshine.

___ B. On a working windjammer cruise, spending a week as part of the crew, manning the lines, trimming the sails, and keeping night watches.

___ C. Traveling in Europe, visiting as many of its major cities and sights as you can in your two-week trip.

___ D. On a photographic tour of the Grand Canyon and other nearby scenic wonders.



Scoring:

Question 1:

A: Clairaudient B: Clairvoyant C : Intuitive D : Psychic Feeler

Question 2 :

A : Clairaudient B : Psychic Feeler C : Clairvoyant D : Intuitive

Question 3 :

A : Clairaudient B : Psychic Feeler C : Clairvoyant D : Intuitive

Question 4 :

A : Psychic Feeler B : Clairaudient C : Intuitive D : Clairvoyant

0-1 Intuitive: While it's not impossible to develop your intuitive powers, it's certainly a greater challenge for you. With a result like this, your psychic talents may well lie in another direction, and you may find it easier to focus your efforts there.

2-3 Intuitive: You have definite potential in this area. You just need to strengthen it.

4 Intuitive: You're already there. You just need to fine-tune it.

The Psychic Intuitive Personality

The four main psychic abilities come with their own set of personality traits. Learn the traits for each, and you can diagnose the psychic ability a person is likely best at.

Their Strengths:

- They are excellent anticipators of problems or difficulties.
- They're quick-minded and can adjust rapidly to changing circumstances.
- They have a natural sense for being in the right place at the right time.
- They don't waste time worrying needlessly.
- They're innovators with limitless creativity and seldom do they feel restricted by convention.
- They instinctively know the needs of family members and loved ones.
- They always know what's happening, what's the latest thing. They love a good party and always know where one can be found.

Their Weaknesses:

- They can be a bit scatterbrained at times due to the sheer volume of thoughts and ideas they can receive.
- They're easily bored and frequently don't complete a project started with enthusiasm but dropped when enthusiasm waned.
- They can pick up information far in advance and sometimes too soon for some peoples' liking.
- They're often ahead of other peoples' sense of timing and are resented for it.
- They can speak too quickly, blurting out what comes to mind without thinking it over first.
- They're the friend who says 'I know' before you're even finished sharing your news.
- They often act on impulse, but it usually works out well for them.

A decorative border with intricate floral and scrollwork patterns in each corner, framing the central text.

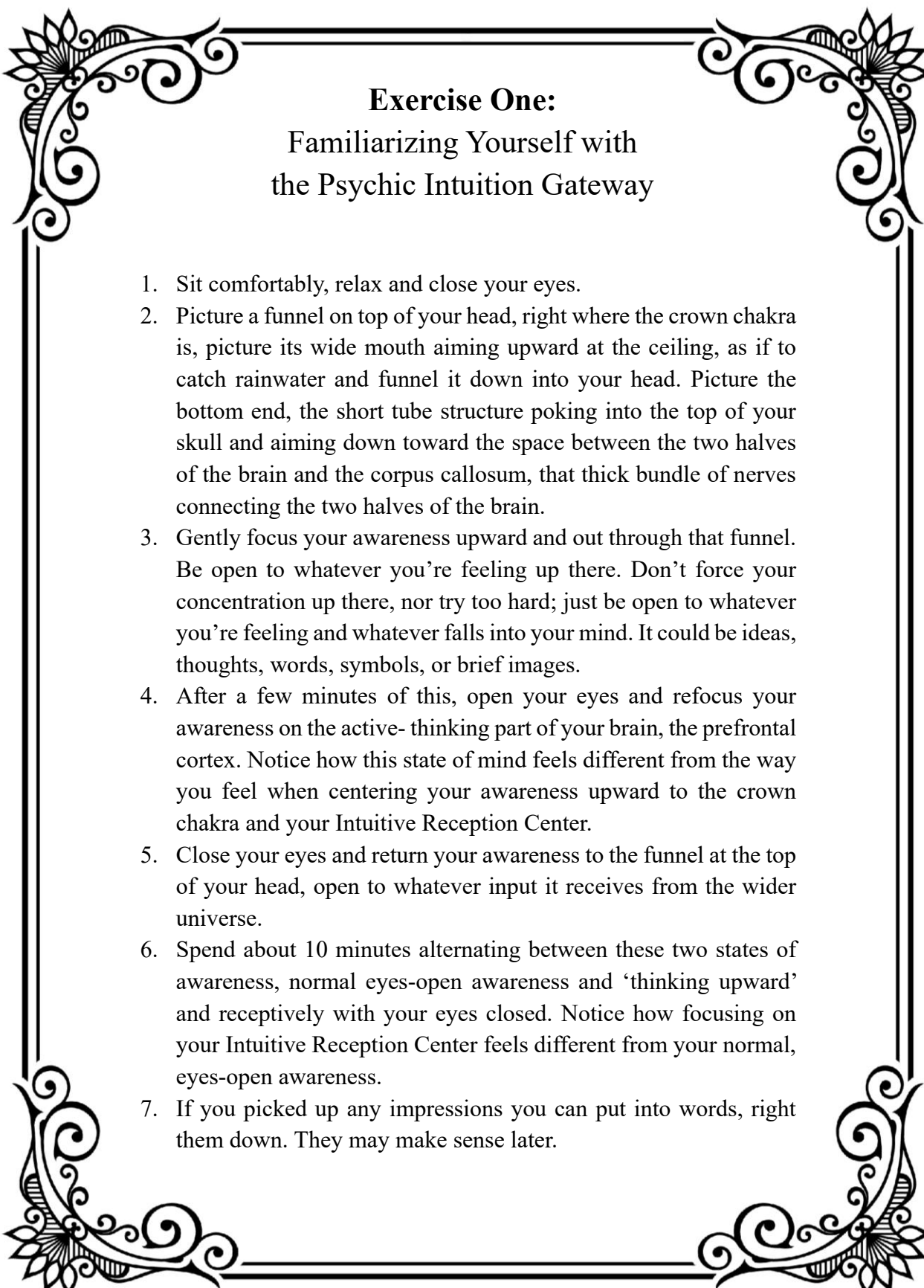
Advantages and Disadvantages of Psychic Intuition Ability

Advantages:

- It's the **quickest** of the psychic senses. 'Knowing' just comes in immediately.
- It's the best psychic sense at serving as an **early warning system**.
- It's the best psychic ability for **sensing the future**.
- It's the best psychic sense for **remotely scanning a location**. Intuition can come in as a feeling, sound, smell, or image, not just as a thought.
- It's the **most unlimited** of the four psychic senses.

Disadvantages:

- Impressions received are often very fleeting and sometimes hard to capture ~ or recapture once they're gone.
- Impressions frequently come in with no other supporting information, which can make it hard to defend what is being perceived intuitively.
- It is the hardest psychic sense to trust initially. Intuitive insights can be mistaken for just another idea the normal course of thought.

A decorative border with intricate floral and scrollwork designs in each corner, framing the central text.

Exercise One: Familiarizing Yourself with the Psychic Intuition Gateway

1. Sit comfortably, relax and close your eyes.
2. Picture a funnel on top of your head, right where the crown chakra is, picture its wide mouth aiming upward at the ceiling, as if to catch rainwater and funnel it down into your head. Picture the bottom end, the short tube structure poking into the top of your skull and aiming down toward the space between the two halves of the brain and the corpus callosum, that thick bundle of nerves connecting the two halves of the brain.
3. Gently focus your awareness upward and out through that funnel. Be open to whatever you're feeling up there. Don't force your concentration up there, nor try too hard; just be open to whatever you're feeling and whatever falls into your mind. It could be ideas, thoughts, words, symbols, or brief images.
4. After a few minutes of this, open your eyes and refocus your awareness on the active- thinking part of your brain, the prefrontal cortex. Notice how this state of mind feels different from the way you feel when centering your awareness upward to the crown chakra and your Intuitive Reception Center.
5. Close your eyes and return your awareness to the funnel at the top of your head, open to whatever input it receives from the wider universe.
6. Spend about 10 minutes alternating between these two states of awareness, normal eyes-open awareness and 'thinking upward' and receptively with your eyes closed. Notice how focusing on your Intuitive Reception Center feels different from your normal, eyes-open awareness.
7. If you picked up any impressions you can put into words, right them down. They may make sense later.

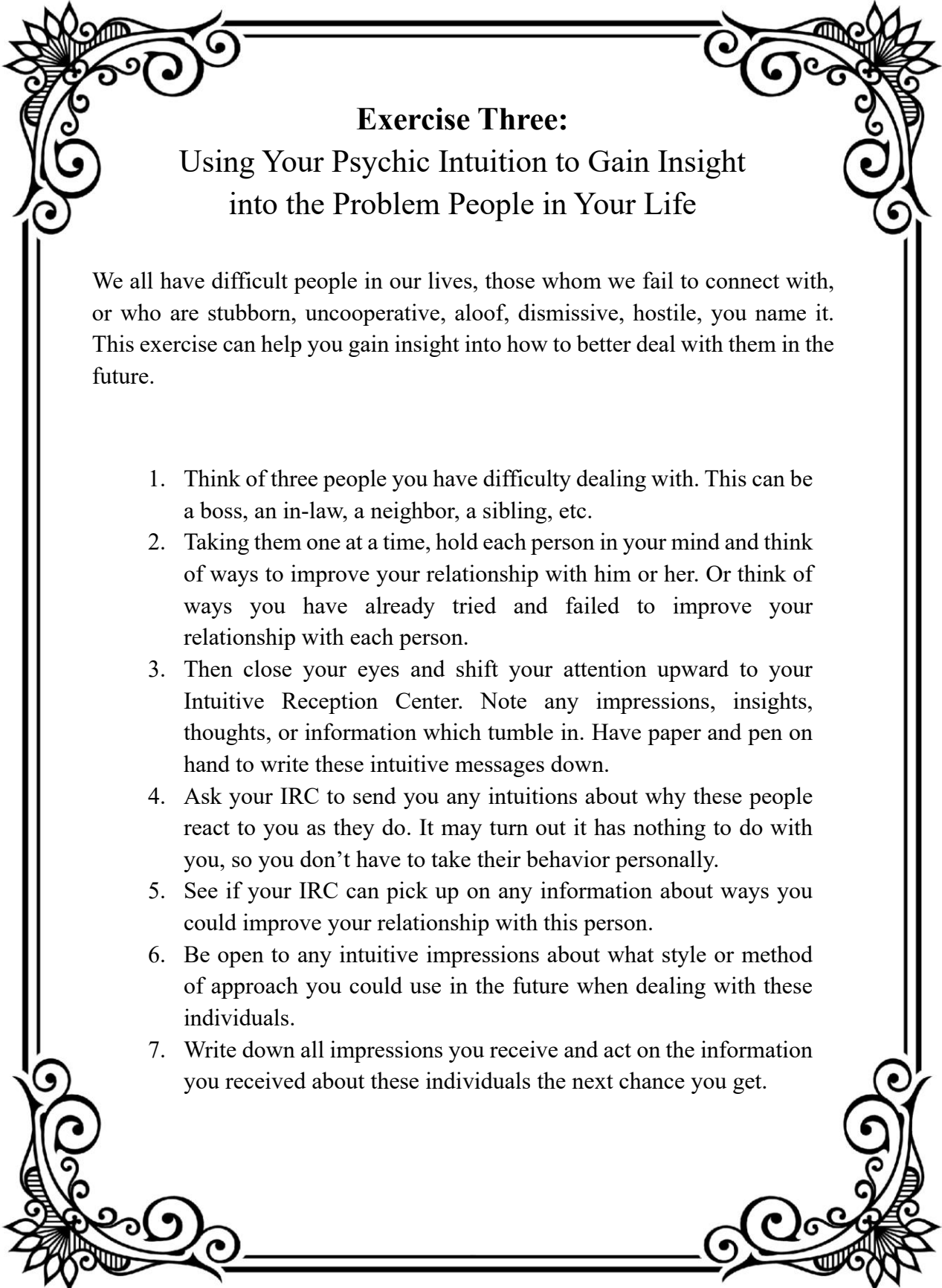
Exercise Two:

Learning How to Remote-Sense a Specific Location Using Your Psychic Intuition Center

1. Select a remote location you wish to scan.
2. You may first want to list what you want to scan for about your location. For example, is someone there? Is it active or still? If some activity is going on, what is happening? Is there a particular smell at the location? Are you feeling an emotion there, or a particular mindset? Write down these impressions as soon as you receive them, because psychic intuition impressions can be fleeting.
3. Close your eyes and hold each location in mind for a minute or two.
4. Shift your attention upward to your Intuitive Reception Area (the funnel place). Note your first impression and write it down. Ask each of your questions for that location and write down what you get.
5. If possible, call, text or visit the location you remote-sensed to verify if the impressions you received were accurate.
6. If you wish, you can choose another location to remote-sense and follow the procedure as outlined above.

Alternative exercise: the Web-Cam Experience

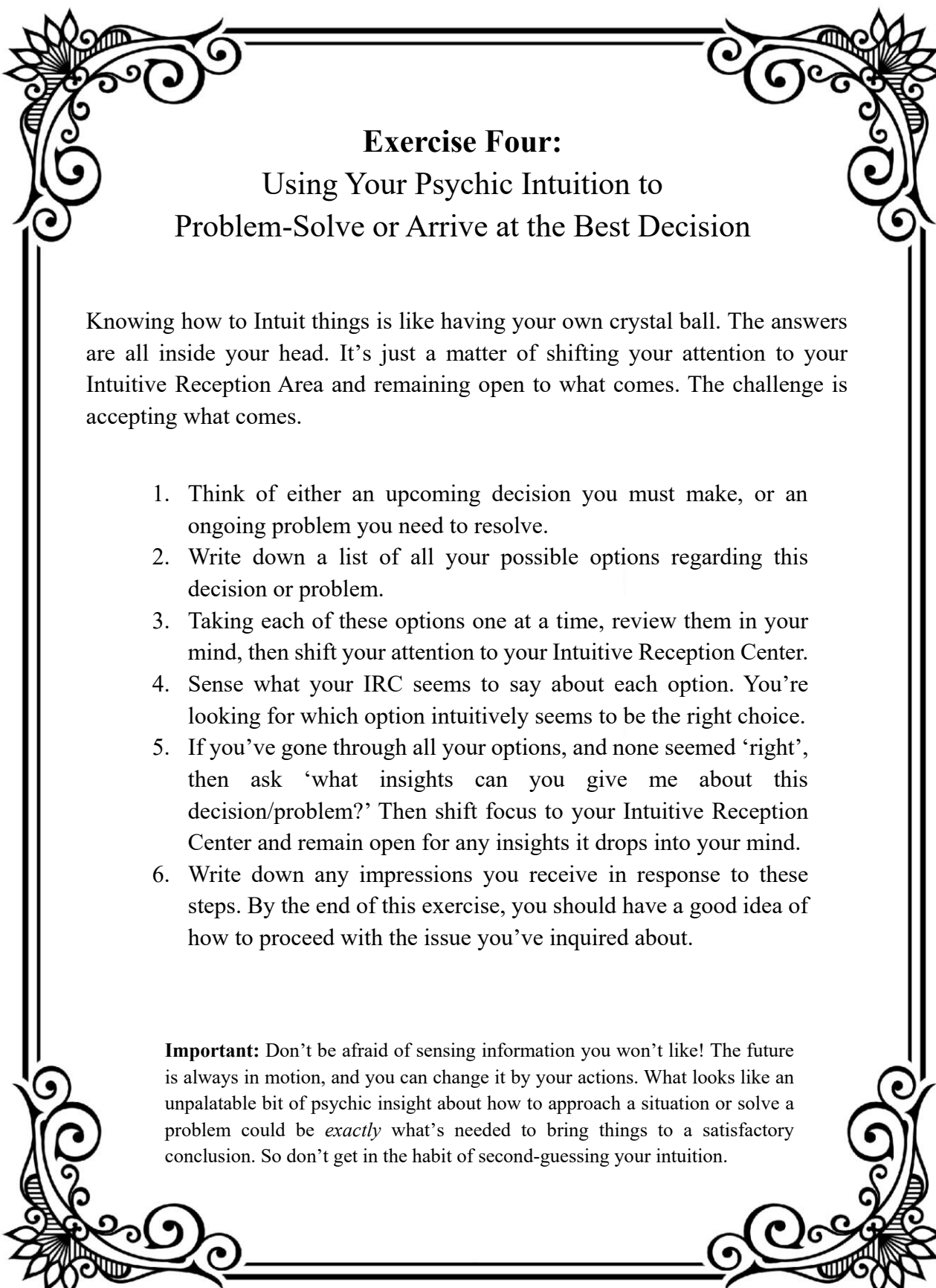
1. Webcams are global. Choose a location you'd like to remote-sense, then follow the exercise as above. Some suggested questions for this exercise: Is it day or night/dark or light there? Morning or afternoon? Cloudy or clear? What's the weather like? Is there a particular smell in the air there? Is traffic heavy or light? Are there many people or few? Is anything special going on there?
2. Check this location's webcam. How close did your impressions come to what actually appears to be going on there?
3. If you want, try another location to sense. How accurate were your impressions for this second location?



Exercise Three:
Using Your Psychic Intuition to Gain Insight
into the Problem People in Your Life

We all have difficult people in our lives, those whom we fail to connect with, or who are stubborn, uncooperative, aloof, dismissive, hostile, you name it. This exercise can help you gain insight into how to better deal with them in the future.

1. Think of three people you have difficulty dealing with. This can be a boss, an in-law, a neighbor, a sibling, etc.
2. Taking them one at a time, hold each person in your mind and think of ways to improve your relationship with him or her. Or think of ways you have already tried and failed to improve your relationship with each person.
3. Then close your eyes and shift your attention upward to your Intuitive Reception Center. Note any impressions, insights, thoughts, or information which tumble in. Have paper and pen on hand to write these intuitive messages down.
4. Ask your IRC to send you any intuitions about why these people react to you as they do. It may turn out it has nothing to do with you, so you don't have to take their behavior personally.
5. See if your IRC can pick up on any information about ways you could improve your relationship with this person.
6. Be open to any intuitive impressions about what style or method of approach you could use in the future when dealing with these individuals.
7. Write down all impressions you receive and act on the information you received about these individuals the next chance you get.

A decorative border with ornate floral and scrollwork designs in each corner, framing the central text.

Exercise Four:

Using Your Psychic Intuition to Problem-Solve or Arrive at the Best Decision

Knowing how to Intuit things is like having your own crystal ball. The answers are all inside your head. It's just a matter of shifting your attention to your Intuitive Reception Area and remaining open to what comes. The challenge is accepting what comes.

1. Think of either an upcoming decision you must make, or an ongoing problem you need to resolve.
2. Write down a list of all your possible options regarding this decision or problem.
3. Taking each of these options one at a time, review them in your mind, then shift your attention to your Intuitive Reception Center.
4. Sense what your IRC seems to say about each option. You're looking for which option intuitively seems to be the right choice.
5. If you've gone through all your options, and none seemed 'right', then ask 'what insights can you give me about this decision/problem?' Then shift focus to your Intuitive Reception Center and remain open for any insights it drops into your mind.
6. Write down any impressions you receive in response to these steps. By the end of this exercise, you should have a good idea of how to proceed with the issue you've inquired about.

Important: Don't be afraid of sensing information you won't like! The future is always in motion, and you can change it by your actions. What looks like an unpalatable bit of psychic insight about how to approach a situation or solve a problem could be *exactly* what's needed to bring things to a satisfactory conclusion. So don't get in the habit of second-guessing your intuition.

Exercise Five:

Using Your Psychic Intuition to Gain Insight into the Future of People, Countries, Corporations, or Other Large Things

Once you've mastered accessing your Intuitive Reception Center for personal benefit, the next challenge is using it to try determining larger societal trends or about the future of someone famous. You don't *have* to learn how to do this, but you may be able to put what you glean to good use.

1. Choose a celebrity, public figure, company, or country you want to receive information about regarding their/its future.
2. Focus your mind on your chosen subject for at least a few moments. Then ask, either to yourself or out loud, 'what is just ahead for this person/country/corporation regarding _____?'
3. Blank your mind and shift your attention to your Intuitive Reception Center. Be open to whatever you get, however brief or nonsensical. It could be a word, phrase or sentence. It could be a physical sensation, image or symbol. Write it down as soon as you can.
4. Using this same procedure, try whole categories, such as 'What is the next new thing in the field of Physics? Music? Inventions? Medicine? Technology? Spirituality?' Choose a category and focus on it for a few moments. Then ask the question, either to yourself or out loud.
5. Clear your mind, close your eyes and shift your awareness upward to your Intuitive Center. Write down whatever comes in.
6. Review your notes and seek clarity with your IRC if anything you received confuses you. File your notes and return to them in a month or two. Investigate whatever topic you asked about and write any follow-up notes needed. Did anything happen which reflected the intuitive messages you received about this subject?

Psychic Intuition ~ Impressions Record Sheet

Target/Subject: _____ Date: _____

Impressions:

Images/Symbols:

Follow-Up Notes:

Target/Subject: _____ Date: _____

Impressions:

Images/Symbols:

Follow-Up Notes:
